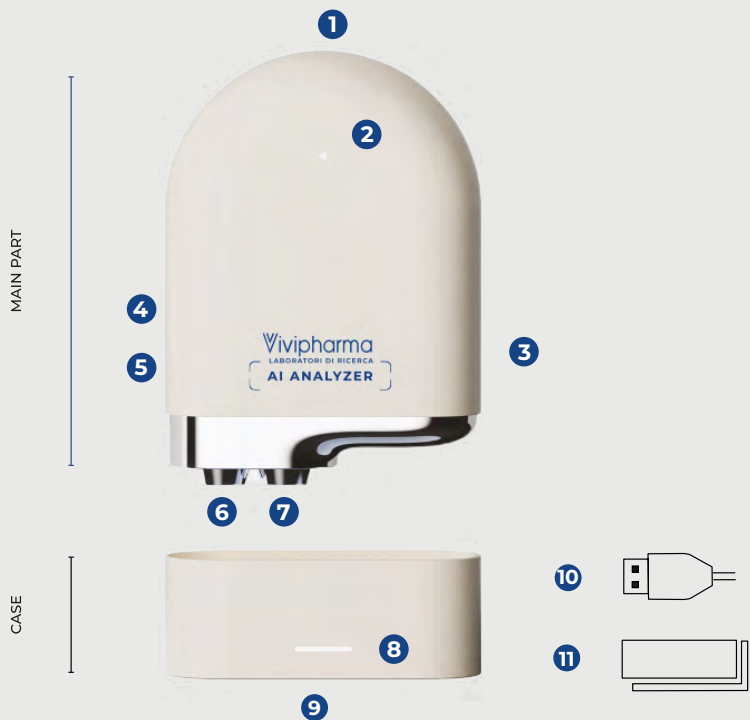




DEVICE PARTS AND ACCESSORIES



- | | |
|-------------------------------|-----------------------------------|
| 1 Photo button | 6 Camera |
| 2 Connection status indicator | 7 Sensors |
| 3 Power on/off | 8 Led Steriliser |
| 4 Charge status indicator | 9 USB |
| 5 USB | 10 Charger |
| | 11 Microfibre lens cleaning towel |



Scan the **QR Code** you find here and download the App that allows you to connect **Vivipharma AI ANALYZER** to your mobile device.

HOW TO USE



1. Switch on **Vivipharma AI ANALYZER** pushing **Power on/off** **A** button for 3 seconds.

2. When **Vivipharma AI ANALYZER** is on LED light **B** blinks quickly, 3 times in a second.

When **Vivipharma AI ANALYZER** is waiting to be connected to the mobile device LED light **B** blinks slowly, one time in a second.

3. Access the dedicated APP on a device connected to the internet and enter the **Email** and **Password** provided by Vivipharma.

4. Click on the **SETTINGS** button  in the top left of the main screen and then click on the **AI ANALYZER** symbol in the top right of the new screen.

A



Not connected



Connected

5. To connect **Bluetooth**, click on the serial number that appears under Available Scanners. Once connected, the LED light of the AI ANALYZER **B** will be steady. Press the NEXT button (bottom right).

6. At this point, choose the same Internet line to which the mobile device used is connected and enter its password to start the connection.

7. Return to the main page and press the START button.

8. Once the skin/hair analysis is complete, insert the **AI ANALYZER** main part into the case **C** to proceed with sterilisation.

RECHARGE

Follow the instructions for safe use of the USB charger. Note: The device does not contain a power supply. **To charge the device, it is necessary to connect it to the socket with a USB cable.**

1. Make sure the device is switched off and in a stable position.

2. Connect the supplied cable to the charging socket on the device and the other end to a USB charger, insert the plug into an electrical socket of the correct voltage.

3. Make sure the cable is connected correctly otherwise the device may not charge.

4. Minimum charging time 60min.

Charge status indicator **4**

 Charge over 90%

 Charge between 30% - 90%

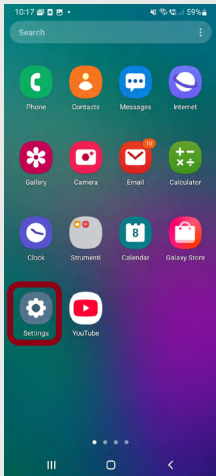
 Charge under 30%

If you use a mobile device with an **Integrated Internet Data Sim**, follow these steps:

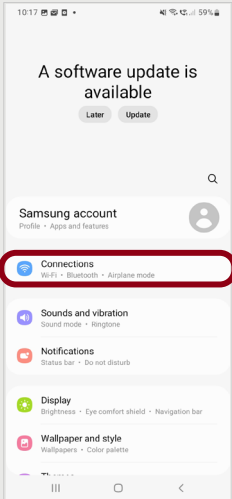
1 **ANDROID HOTSPOT**

ACCESS FROM SETTING

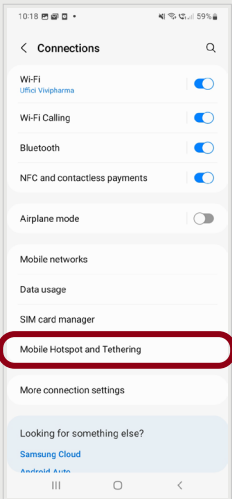
SETTING



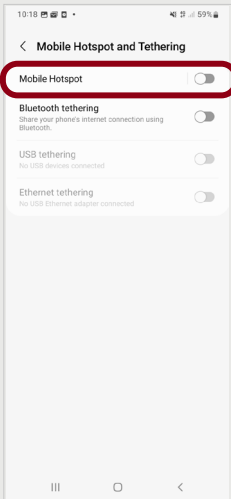
CONNECTION



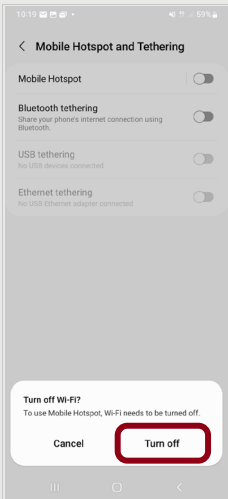
SELECT
MOBILE HOTSPOT



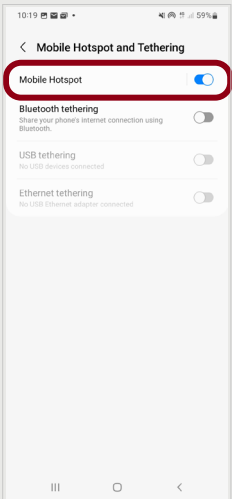
MOBILE HOTSPOT "ON"



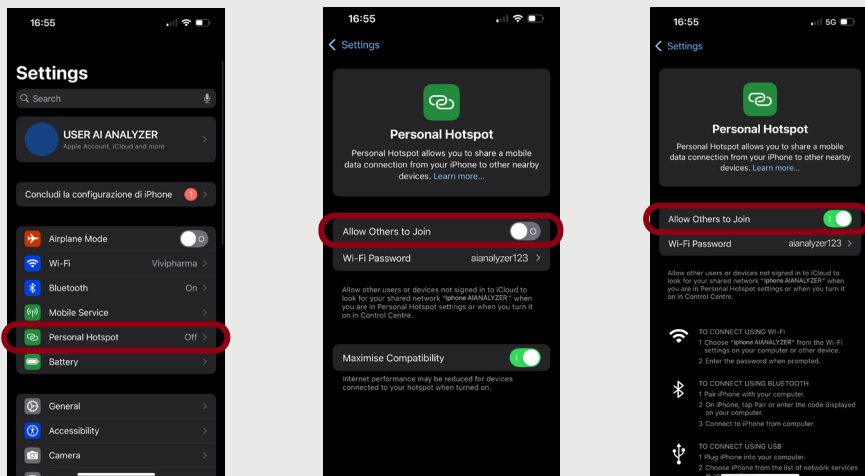
TURN OFF



TURN ON AND CHECK SIGNAL



FROM SETTING: PERSONALE HOTSPOT "ON"



PRECAUTION

1. Take care to keep the Vivipharma AI ANALYZER away from water. If the lens or sensors come into contact with water, there is a risk of malfunction.
2. If necessary, dry the lens and sensors with the micro-fibre towel provided.
3. Take care that external elements do not enter the lens holes or sensor area.
4. Do not bump or shake.
5. Do not disassemble, modify or repair the Vivipharma AI ANALYZER yourself.
6. Keep Vivipharma AI ANALYZER out of the reach of children.
7. If the Vivipharma AI ANALYZER becomes unusually warm during use or charging, stop charging and contact Service.
8. If something does not work properly, press the Power on/off button (3) for seconds to restart.
9. If something does not work correctly as in the previous hypothesis (point 8), press the Power on/off button (3) and the photo button (1) for 7 seconds to restart the device.
10. Use only the cable supplied with the Vivipharma AI ANALYZER for charging.

SERVICE

Vivipharma AI ANALYZER is covered by a one-year warranty from the date of purchase. The warranty covers all manufacturing defects. The following are excluded from the warranty:

1. Failure due to contact with water or other liquids that have entered the Vivipharma AI ANALYZER.
2. Failure due to high impact.
3. Failure due to use of a charging cable other than the one supplied or due to incorrect voltage.

4. If Vivipharma AI ANALYZER is damaged because it has been disassembled.

5. Malfunction due to failure to follow the precautions in this manual.

6. In the event of failure due to the negligence of the user.